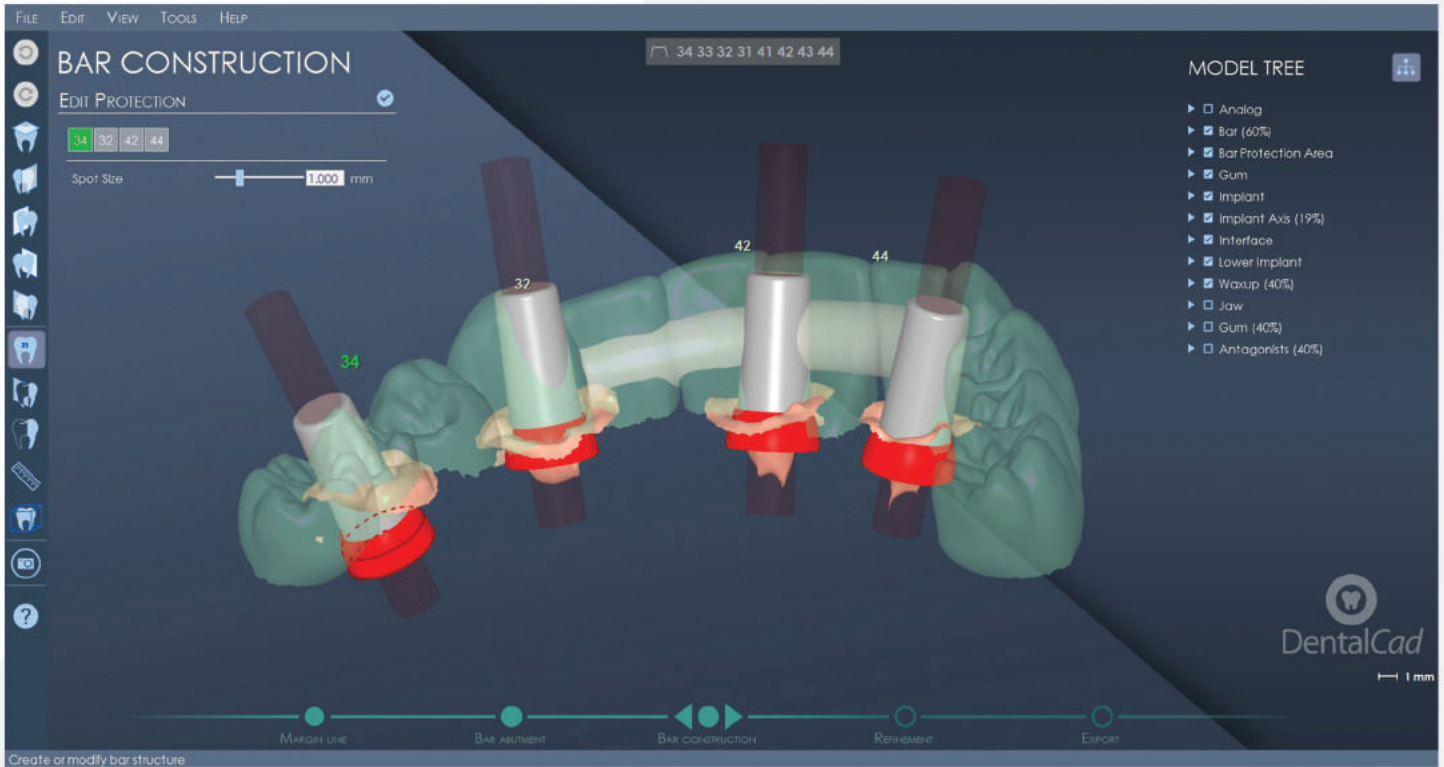




DentalCad

innovation is just a click away

The first software for dental modeling
designed to support your expertise



Smart

Guided workflow for
beginners & Expert
Mode for Pro users



Lifetime

Perpetual license
with no mandatory
maintenance fee



Open

Import/export of
standard formats
STL, PLY, OBJ, ASC



CAM

High quality mesh for
3D printing, milling
and laser sintering

Easy & Intuitive: perfect
for both clinics and labs.

Download the free trial

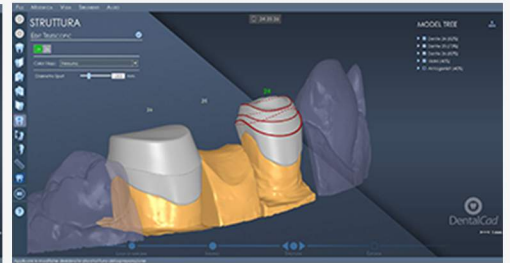
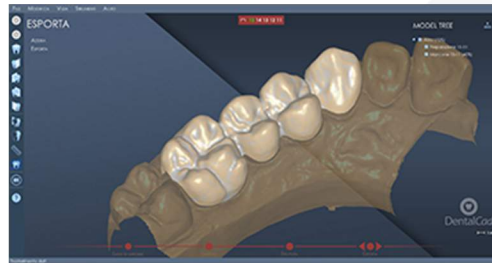
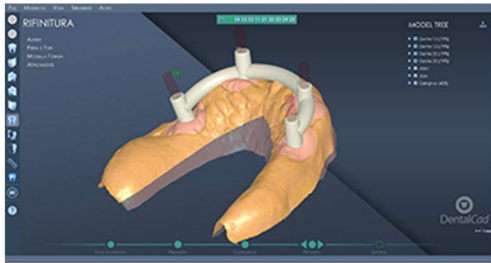


Join our webinars



<http://dentalcad.egsolutions.com>

All-in-One CAD

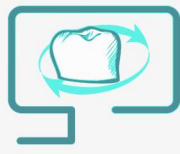


- Anatomic Crown
- Reduced Crown
- Offset Coping
- DICOM Viewer
- Bar
- Attachments
- Provisional
- Inlay
- Onlay
- Implant
- Veneer
- Telescopic
- Maryland Bridge
- Bite Bridge
- Wax-up

Optional Modules



Model Maker



AFG Protocol



Libraries



Full Denture



Smile Design
Integration &
Mock Up



Virtual
Articulator
(Coming Soon)



Partial
Framework
(Coming Soon)

Via del Tappezziere, 4 - 40138
Bologna, Italy

T +39 051 19930101
M sales-team@egsolutions.com
W egsolutions.com