



100% Made in Italy: DScan merges quality and design.

DScan 4 is a new generation intuitive 3D scanner which features most of the key elements both for clinics and dental labs.

It provides all in one scanning of: impression, triple tray, bite, dental model, occlusion information, multi-die, and implant case.

It was fully developed by a team of engineers in collaboration with dental professionals and manufactured in-house by EGS.



DScan Features.

DScan works with open and standard formats, allowing the individual components of the product to be used together with third-party products that support the same formats.

The data can be exported in the most common formats to be read by any CAD/CAM system.

DScan. WHEN SPEED MEETS ACCURACY.



Reliability

DScan has been fully developed in-house as well as its acquisition software to have a perfect compatibility and reliability.



Smart and intuitive

Even the most complex multiple acquisitions can be easily achieved, thanks to a quick and user-friendly interface.



Plug&Play

Supplied with DentalCad software, the pre-installed EGS proprietary software and an integrated PC, DScan is fully Plug & Play. Only a monitor and a mouse are required to use the scanner.



High Performance.

DScan grants maximum precision and accuracy up to 10 microns, thoroughly acquiring even the smallest details and allowing for extremely faithful reconstructions and powerful point clouds management.

High-quality mechanical and custom electronic components for improved reliability, speed and efficiency and a completely open system giving you the possibility of importing and exporting data in standard formats (STL, PLY, OBJ, ASC) to be used by any CAD software.

With the latest generation of internal components, DScan 4 achieves 50% higher performance than the previous version.

Most sensitive and high-precision cameras with USB 3.0 interface, thus capturing 25fps.



Complete Scanning Strategies.

Guided workflow or free scanning mode? DScan gives you wide range of possibilities and total freedom to choose your favorite scanning strategy. Keep perfect track of the relative position of every tooth with the in-place acquisition strategy, or accurately scan many teeth at once with the multi-die strategy in 5 position or work quick with fast copings.

The selective scanning of gums, abutments, bridges, antagonists, wax-ups, impressions, implants and check-bites is possible and easily done.

Discover the smart acquisition: set free your expertise for completely managing your scans, registrations and imports.

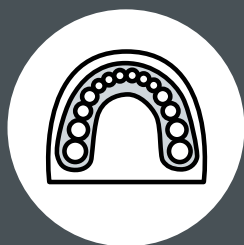
**NO LIMITS, NO BOUNDARIES.
FEEL FREE TO SCAN HOWEVER, WHENEVER.**





What can I scan?

With DScan users can customize the acquisition strategies and parameters or use the specific acquisition strategies provided with the scanner, designed to be optimized for the requirements of the CAD software.



Raw model



Prepared model



Antagonist



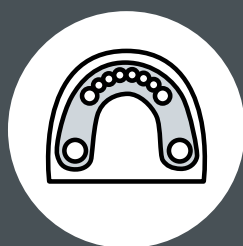
Models in occlusion



Bite



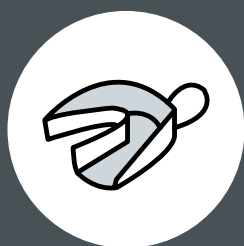
Model for orthodontics



Model for removable frameworks



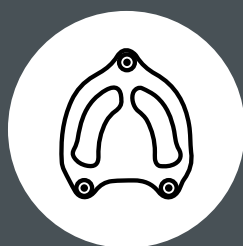
Model for denture



Impression



Triple tray



Verticator



Provisional



Removable gingiva



Abutment



Implant jobs



Quadrant



Wax up



Multi die



iScan

impression 3D scanner

iScan is a structured blue light 3D scanner with integrated PC developed for perfectly meet the dentists' needs.

Bundle the power of digital technology and the accuracy of impressions' data.

Do not renounce to quality on complex restorations but save time by digitally scanning the patient's impression first-hand in your clinic.

Thanks to the easy software's interface and the guided procedure you will be able to scan in few seconds single impression, triple tray, upper, lower, bite and vestibular tray. Moreover, the user can customize the software scanning strategies to meet every daily case.



**DON'T CHANGE
YOUR JOB,
ENHANCE IT
WITH iScan.**



Technical Specifications.

SPECIFICATIONS DScan 4

3D SCANNING TECHNOLOGY	Structured BLUE Light
CAMERAS RESOLUTION	1.3 Megapixel
ACQUISITION SPEED	25 fps (frame per second)
INTERFACE	USB 3.0
QUICK AND EASY SCANNING	Guided workflow and Expert mode
ROTARY STAGE	2 axis movement (rotation, tilting)
3D ACQUISITION VOLUME (W x D x H)	90 mm x 80 mm x 70 mm
ACCURACY	0.010 mm
OUTPUT FORMATS	STL, PLY, OBJ, ASC
SIZE (W x H x D)	250 mm x 450 mm x 450 mm
WEIGHT	21 Kg
3D SCANNING OF THE VERTICULATOR	Yes
SSD	256 GB

FEATURES

HIGH PRECISION AND REPRODUCIBILITY	up to 0.010 mm accuracy, tested in a metodological environment.
SCANNING OPTIONS (AUTO ALIGNMENT)	Impression, triple tray, bite, antagonists, wax-ups, gum, implants, multidiies, verticulator.
MAXIMUM RELIABILITY	High-quality custom mechanical and electronic components.
COMPACT SIZE (PC INTEGRATED)	Thanks to its reduced size and weight, DScan can fit in any laboratory or clinic.
CUSTOM CONFIGURATION	User are able to fully customize scanning strategies and modelling options.
OPEN SYSTEM	Datasets can be exported in open formats, which can be read using any CAD/CAM system.
LIFETIME LICENSE	The software license is permanent, with no annual fee required.
UPDATING AND SUPPORT	Software maintenance is not mandatory, but is available on request.

THE INTEGRATED PC HAS THE FOLLOWING CHARACTERISTICS

7TH GENERATION INTEL "CORE" SERIES i7 7700 3.6 Ghz

Nvidia "GeForce" GT 730 2GB DDR3

HARD DISK SSD 256GB SATA 2.0

MEMORY 16 GB RAM TYPE DDR3. MEMORY SPEED 1600 MHZ

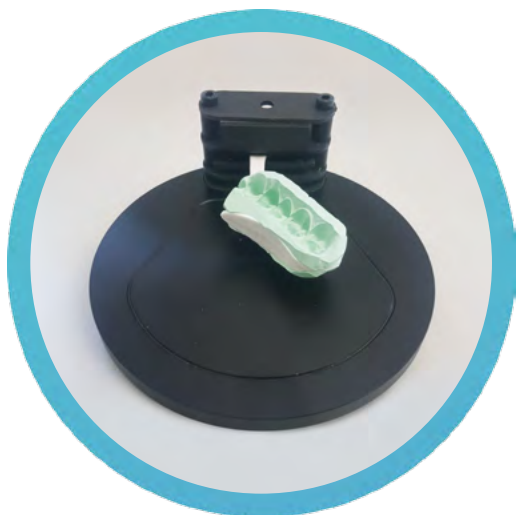
ETHERNET 10/100/1000 Mbps + WiFi 802.11n

1 DVI, 1 HDMI, eSATA, 4 USB 3.0, 2USB 2.0

OS Windows® Pro 10 - 64 Bit

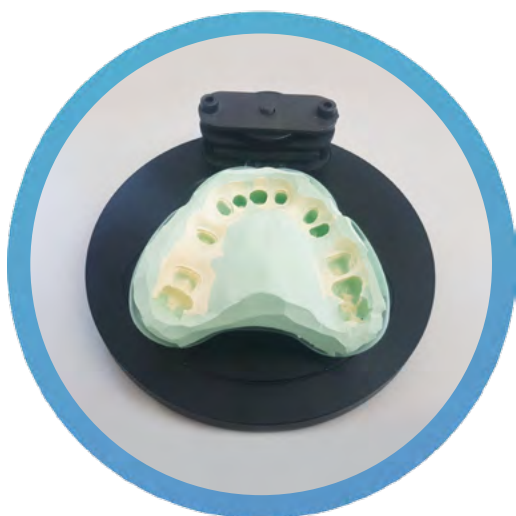
Accessories.

DScan can be implemented with the impression scanning kit for complete digital workflow management getting the most out of your solution.



Triple tray scanning

Maximum simplicity of scanning thanks to the new holders developed by EGS.



Complete arch scanning

High quality standard even in the most complex cases.



Registration bite scanning

Ease of use thanks to the step by step guided scanning procedure.

egsolut
MITSUI CHEMICALS GROUP